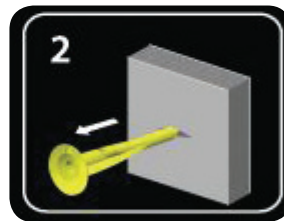
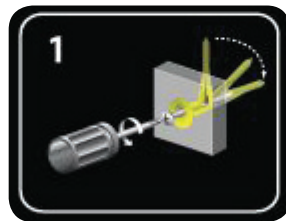
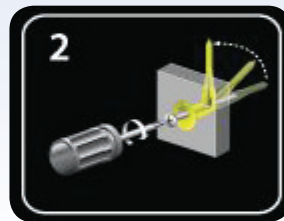
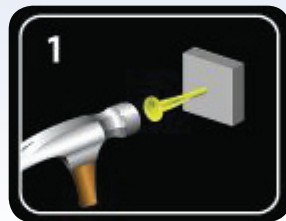


[CONTRACTOR APPROVED]



- No drilling required.
- Installs in seconds.
- Industrial strength.
- Works in 1/2" and 5/8".
- Easy to remove.
- Leaves only small slit.



	83721	WallClaw Drywall Hammer-In Anchor with Screws	25	
	83723	WallClaw Drywall Hammer-In Anchor with Screws	50	
	83727	WallClaw Drywall Hammer-In Anchor with Screws	100	

★ ★ ★ ★ ★ *"Growth Through Innovation"* ★ ★ ★ ★ ★

229 Cross Street, Bristol, CT 06010
 800-243-8272 • 800-831-9358
 sales@metallicsonline.com

651 North Main Street, Mancos, CO 81328
 800-269-5183 • 800-269-6278
 saleswest@metallicsonline.com