

Metallics

NEW!

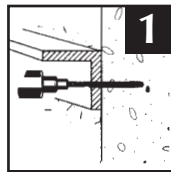
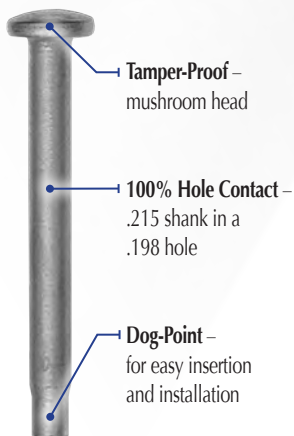
Redi-Drive Anchors

- Light-Duty Hammer-Drive Masonry Anchors
- Specified for anchorage into concrete, block and brick
- As simple as using a nail – drive into predrilled holes in concrete

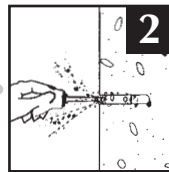


PART NUMBER	HEAD DIA. In. (mm)	DRILL BIT SIZE In. (mm)	TOTAL LENGTH In. (mm)	MIN. EMBEDMENT In. (mm)	MAX. FIXTURE THICKNESS In. (mm)	CLEARANCE HOLE SIZE In. (mm)
RD4034	7/16 (11.1)	3/16 (4.8)	3/4 (19.1)	11/16 (17.5)	1/16 (1.6)	1/4 (6.4)
RD4118	7/16 (11.1)	3/16 (4.8)	1-1/8 (28.6)	3/4 (19.1)	3/8 (9.5)	1/4 (6.4)
RD4158	7/16 (11.1)	3/16 (4.8)	1-5/8 (41.3)	3/4 (19.1)	7/8 (22.2)	1/4 (6.4)
RD4200	7/16 (11.1)	3/16 (4.8)	2 (50.8)	3/4 (19.1)	1-1/4 (31.8)	1/4 (6.4)
RD4212	7/16 (11.1)	3/16 (4.8)	2-1/2 (63.5)	3/4 (19.1)	1-3/4 (44.5)	1/4 (6.4)
RD4300	7/16 (11.1)	3/16 (4.8)	3 (76.2)	3/4 (19.1)	2-1/4 (57.2)	1/4 (6.4)

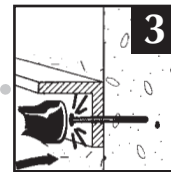
PART NUMBER	UPC #	DESCRIPTION	QTY / PKG	SUG. TRADE LIST / PKG
RD4034	74484	Redi-Drive Finish Head Anchor 3/4" long	100	\$ 26.63
RD4118	74486	Redi-Drive Finish Head Anchor 1-1/8" long	100	\$ 29.65
RD4158	74488	Redi-Drive Finish Head Anchor 1-5/8" long	100	\$ 32.43
RD4200	74490	Redi-Drive Finish Head Anchor 2" long	100	\$ 39.63
RD4212	74492	Redi-Drive Finish Head Anchor 2-1/2" long	100	\$ 48.20
RD4300	74494	Redi-Drive Finish Head Anchor 3" long	100	\$ 54.20



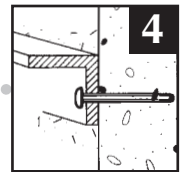
1
Drill a proper-sized diameter hole at a minimum depth (see chart ANSI B212.15-1994).



2
Clean hole. Please note hole is 3/16" but diameter of Redi-Drive is 1/4".



3
Insert anchor through material to be fastened and drive with a 3-lb. hammer until head is flush with surface.



4
Anchor is now set for Redi-Drive Anchor.

"Growth Through Innovation"

Metallics

229 Cross Street, Bristol, CT 06010
Tel 800-243-8272 • **Fax** 800-831-9358
Email sales@metallicsonline.com

Metallics West

651 North Main Street, Mancos, CO 81328
Tel 800-269-5183 • **Fax** 800-269-6278
Email saleswest@metallicsonline.com

www.metallicsonline.com